



148-119 EcoQuantum™

Elongated Front, SmartHeight™
Pressure-Assist, Dual Flush Two-Piece Toilet

Features

- Stylish contemporary design
- SmartHeight™ (17-1/4" high bowl)
- Chair height for maximum comfort
- High performance, high efficiency (HET), pressure-assist EcoFlush™ dual flushing technology
- Dual flush high efficiency toilet (HET) with dual action trip lever
 - Push down for high efficiency flush 1.1 gpf / 4.0 lpf
 - Pull up for full flush 1.6 gpf / 6.0 lpf
- 2-1/8" glazed trapway
- SAVES up to 40% more water than conventional 1.6 gpf flushing systems
- SAVE more money! EcoQuantum™ qualifies for many water district rebate programs
- Commercial rated flushing systems with Map Test results over 600 grams
- Available in White and Standard Colors: Biscuit and Classic Bone (Consult price book for specific colors)
- Model 50 chrome plated metal trip lever (Consult price book for additional finishes)
- Upgrade with a color-match SmartClose™ or Primo™ toilet seat
- Outstanding protection — The Mansfield® limited lifetime warranty
- Complies with ADA requirements for accessibility

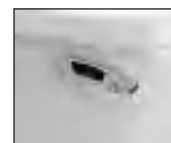


Dual Flush Technology
Saves Water and Money



Model 148-119
Shown with SB1200
Primo™ toilet seat

ECO|FLUSH



Model 119RH Tank
Shown with
Model 50
right hand trip lever



Model 119CL Tank
Tamper resistant
locking device
discourages vandalism
Ideal for commercial use

Model No.	Description	Approx. Wt.
148-119	Elongated front, SmartHeight™ two-piece dual flush (1.1 gpf/4.0 lpf) pressure-assist toilet. Includes tank trim and chrome plated metal trip lever. Less toilet seat and supply. Specify color.	98 lbs. (45 kg)
148	Elongated front, SmartHeight™ toilet bowl only. 12" rough-in. Less toilet seat. Specify color.	55 lbs. (25 kg)
119	Dual Flush, pressure-assist tank and cover only with left hand, chrome plated metal trip lever. Less supply. Specify color.	43 lbs. (20 kg)
119RH	Same as model 119, except with right hand chrome plated, metal trip lever.	43 lbs. (20 kg)
119CL	Same as model 119, except with cover lock.	43 lbs. (20 kg)
SB1175	Elongated, SmartClose™ toilet seat.	5.5 lbs. (2 kg)
SB1200	Elongated, Primo™ toilet seat.	5.5 lbs. (2 kg)

HIGH EFFICIENCY TOILET
HET



148-119

EcoQuantum™

Elongated Front, SmartHeight™
Pressure-Assist, Dual Flush Two-Piece Toilet

Features & Upgrades

Dual Flush Technology

The ultimate in water conservation is a high efficiency toilet (HET). Push down for a 1.1 gpf / 4.0 lpf or pull up for a 1.6 gpf / 6.0 lpf per flush. A quiet and powerful flush - every time. Reliable savings without compromise.



High Performance

The new dual flush, pressure-assist, vessel delivers outstanding performance at both 1.1 gpf/4.0 lpf and 1.6 gpf/6.0 lpf. Meets or exceeds all ANSI/ASME performance criteria. Pneumatic actuator for Easy-Touch flushing action and reliable operation.



Conservation

Saves up to 40% more water than conventional 1.6 gpf/6.0 lpf flushing systems. By conserving water you can more effectively manage business and residential resources, save money and make a positive contribution to the environment.



Add a Toilet Seat

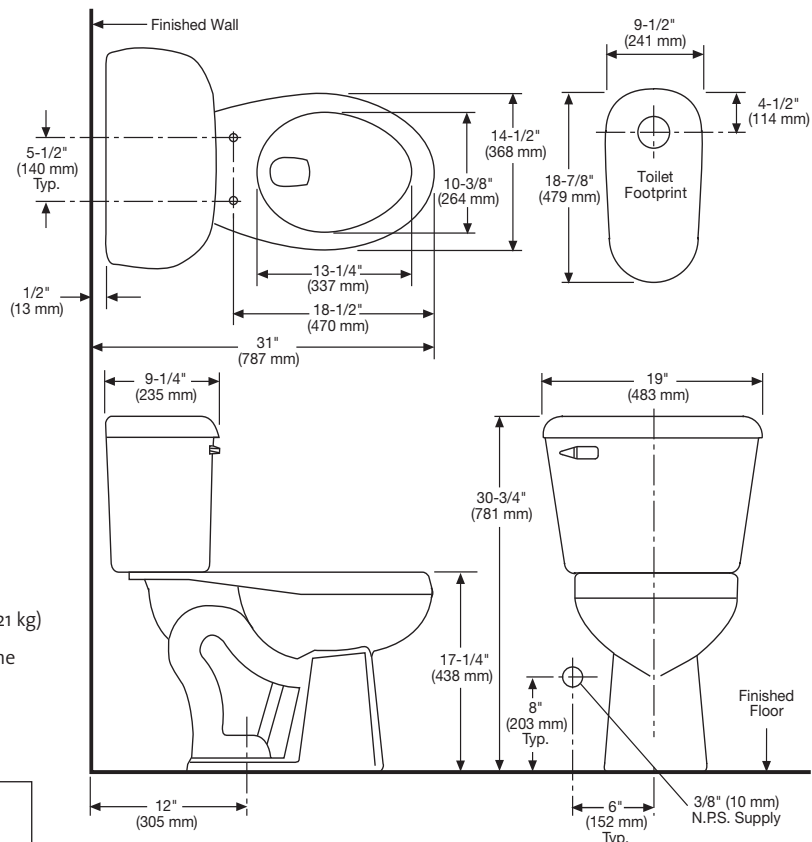
With a simple touch, Mansfield's newest SmartClose™ toilet seat closes gently and quietly. Or upgrade your toilet with a popular Primo™ toilet seat. Made of durable, high impact, heavy-duty plastic. For all applications — Get More, Get Mansfield®.



Technical Information

Specifications

Material	Vitreous China
Water Pressure Range	35 to 80 static P.S.I.
Flush System	EcoFlush™ Dual Flushing Technology
Water Usage	1.1 gpf / 4.0 lpf 1.6 gpf / 6.0 lpf
Water Surface Area	10" x 12"
Trap Diameter	2-1/8"
Trap Seal	2-3/4"
Rough-In	12"
Shipping Dimensions	Model 148 29-1/4" x 15-1/4" x 18" (743 mm x 387 mm x 457 mm) Model 119/119RH/119CL 21" x 11-3/8" x 17-3/4" (533 mm x 289 mm x 451 mm)
Shipping Weight	Model 148 - 57.8 lbs (26 kg) Model 119/119RH/119CL - 47 lbs (21 kg)
Warranty	Vitreous China - Limited Lifetime Vessel - Limited Five Year Tank Trim - Limited One Year



These dimensions are nominal and are subject to change without prior notice. Fixture performance and specifications meet or exceed, ANSI/ASME A112.19.2, A112.19.14 standards and CSA B45 standards, and other state and local codes.

NOTE: Install this product according to the installation guide. Fixture dimensions are nominal and conform to tolerances in ASME Standard A112.19.2

See our complete line of acrylic and vitreous china bathroom fixtures, plastic tank trim and plumbing products.



Mansfield Plumbing Products LLC • Customer Service Toll Free 877-850-3060 • Fax 419-938-6234
Website: www.mansfieldplumbing.com • Email: custserv@mansfieldplumbing.com

Form No. M148119 Printed in U.S.A. 11/07
© 2007 Mansfield Plumbing Products LLC